



INFINITY CUTTING SOLUTION

Designed For Growth, Solution For Need



MANUFACTURERS & EXPORTERS

CUTTING TOOLS

YOUR TOOLING SOLUTIONS PARTNER



ABOUT US

Infinity Cutting Solution is a primarily Mechanical company which was established in 2015 by Mr. Mayur Jadhav & Mr. Sagar More in PCMC with having desire to help you in completing your vision and to complete your Cutting-Edge dream.

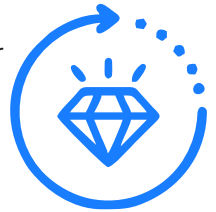
Infinity Cutting Solution has supported renowned tooling brands, with its team of skilled and experienced engineers & marketing professionals. ICS has been instrumental in delivering global cutting tool solutions and technologies to its customers across India.

Infinity Cutting Solution is a professionally managed company with a strong network of dynamic, technical & commercial personnel. Acting as a bridge between various manufacturing hubs in India.



Our Vision

To passionately work towards excellence in the field of sales & marketing with technical service backup. To render most effective solutions to our clients and optimize their production costs and enhancing their productivity. Infinity Cutting Solution is a professionally managed company with a strong network of dynamic, technical & commercial personnel. Acting as a bridge between various manufacturing hubs in India.



PRODUCTS

TURNING

Turning is a form of machining, a material removal process, which is used to create rotational parts by cutting away unwanted material. The turning process requires a turning machine or lathe, workpiece, fixture, and cutting tool. We provide:

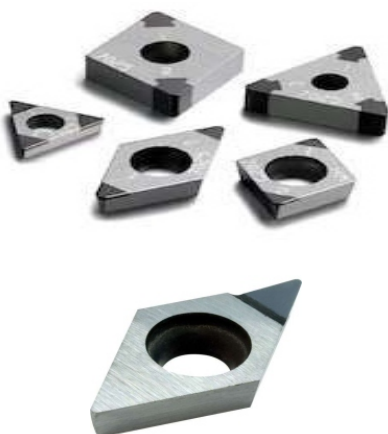
- ✓ ISO Turning Solution
- ✓ Coating : CVD, PVD, Diamond, Cermet
- ✓ Uncoated carbide, Cermet Insert
- ✓ Tool Holder / Boring Bar



CBN / PCD

Cubic boron nitride (CBN) is a high-performance tool material from a polycrystalline mass, that similar to PCD is produced in a high temperature-pressure process, CBN, its hardness only surpassed by a diamond, is suitable for the machining of materials that cannot be machined with PCD or monocrystalline diamond. We provide:

- ✓ All types of Std/Spl Turning Inserts
- ✓ Solid Carbide Tools
- ✓ All Types of End Mills / Drills / Reamers
- ✓ PCD Reamers
- ✓ Special Tooling Solution
- ✓ Edge Millier / Bar Peeler
- ✓ Scalping Insert/Slitter Knife
- ✓ Gear/Railways / Rail wheels
- ✓ Pulley



HOLDERS AND BORING BAR

Boring bars are used for INTERNAL MACHINING on CNC or manual lathes. A boring bar is used to increase the diameter or finish machine a pre-existing hole.

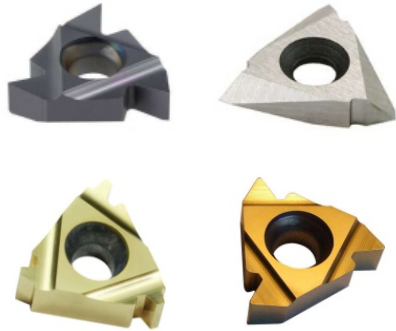


THREADING

Thread grinding is done on a grinding machine using specially dressed grinding wheels matching the shape of the threads. The process is usually used to produce accurate threads or threads in hard materials; a common application is ball screw mechanisms. We provide:

- ✓ Threading Solution
- ✓ Butress / Thread milling

- ✓ ISO / UN / BSW / BSP / NPT(F) / ACME



GROOVING

Groove cutting on CNC lathes is a multi step machining operation. The term grooving usually applies to a process of forming a narrow cavity of a certain depth, on a cylinder, cone, or a face of the part. The groove shape, or at least a significant part of it, will be in the shape of the cutting tool. We provide:

- ✓ Grooving Inserts
- ✓ Parting / Facing / Turning / AI-wheel etc.



SPARES

We offer precision engineered range of Mechanical Spares in various sizes, speed rates and dimensions. Manufactured using quality approved material, these are known for corrosion resistance, dimensionally accurate and longer service life. We provide:

- ✓ A/B/W/M/P-Type Clamptorx Screws
- ✓ A/B/W/M/P-Type Torx Wrench
- ✓ A/B/W/M/P-Type Clamp Pin
- ✓ A/B/W/M/P-Type Shim Wernch
- ✓ A/B/W/M/P-Type Shim Pin
- ✓ Also Cassette / Levers / Locators / Wedge / Bolt etc.



MILLING

Milling is the machining process of using rotary cutters to remove material from a workpiece by advancing the cutter into the workpiece at a certain direction. The cutter may also be held at an angle relative to the axis of the tool. We provide:

- ✓ Milling Solution
- ✓ Profiling Milling Cutter
- ✓ Side Cutter with Adjustable System
- ✓ Face & Shouldering Cutter
- ✓ High feed Cutter for Cast Iron
- ✓ Adjustable Cutter



Our Clients



Contact Us

☎ +91 9049140310 | +91 8208965919

✉ sales@infinitycuttingsolution.com

🌐 www.infinitycuttingsolution.com

📍 Shop No. 27, Omkar industrial Complex,
Sector No. 07, Bhosari MIDC, Pune - 26



Visit Us